

Monetra[®]

Software Installation Guide

**Install Guide v5.5
Updated September 2006**

Copyright 1999-2006 Main Street Softworks, Inc.

The information contained herein is provided "As Is" without warranty of any kind, express or implied, including but not limited to, the implied warranties of merchantability and fitness for a particular purpose. There is no warranty that the information or the use thereof does not infringe a patent, trademark, copyright, or trade secret.

Main Street Softworks, Inc. shall not be liable for any direct, special, incidental, or consequential damages resulting from the use of any information contained herein, whether resulting from breach of contract, breach of warranty, negligence, or otherwise, even if Main Street has been advised of the possibility of such damages. Main Street reserves the right to make changes to the information contained herein at anytime without notice. No part of this document may be reproduced or transmitted in any form or by any means, electronic or mechanical, for any purpose, without the express written permission of Main Street Softworks, Inc.

Table of Contents

1 Overview	4
1.1 Document Revisions	4
1.2 Related Documentation	4
2 Pre Installation	5
2.1 Platform Specific Notes	5
2.1.1 Linux	5
2.1.2 FreeBSD	5
2.1.3 Solaris	5
2.1.4 IBM AIX	5
2.1.5 SCO OpenServer	6
2.1.6 Mac OS X	6
2.1.7 Microsoft Windows®	6
2.2 Communication Notes	6
2.2.1 Supported Internal Application Connections	7
2.2.2 Supported External Application Connections	7
2.3 Data Storage Notes	8
2.3.1 Monetra Database	8
2.3.2 SQL Database	8
2.4 Security Notes	8
2.4.1 IP/SSL	9
2.4.2 Data Encryption	9
3 Installation	10
3.1 Monetra Installer Utility	10
3.1.1 Table Headers	11
3.1.2 Available Functions	12
3.2 Installation on Unix/Linux	12
3.2.1 Download the Monetra Installer Utility	12
3.2.2 Installing Software via the Console	13
3.2.3 Installing Software via the GUI interface	17
3.3 Installation on Mac OS X	18
3.3.1 Download and Install the Monetra Installer Utility	18
3.3.2 Install Remaining Software	21
3.4 Installation on Microsoft® Windows	24
3.4.1 Download and Install the Monetra Installer Utility	24
3.4.2 Install Remaining Software	26
4 Upgrading	29
4.1 Upgrading Monetra from a Pre 5.x series	29
4.2 Upgrading Monetra 5.x series	30
4.2.1 Run the Monetra Installer	30
5 Uninstallation	31
5.1.1 Run the Monetra Installer	31

1 Overview

1.1 Document Revisions

This document was reformatted 01/03/2006.

1.2 Related Documentation

- [Monetra Protocol Guide](#)
- [Monetra Configuration Guide](#)
- [Monetra Secure Implementation Guide](#)

2 Pre Installation

The very first step in installing Monetra will be ensuring that your platform is *ready to go*. Major points of interest include system communications, data storage and payment application security.

2.1 Platform Specific Notes

Designed in C and conforming to POSIX standards, Monetra runs on many of today's most advanced operating systems including Linux, FreeBSD, Mac OS X and Microsoft Windows XP. We have outlined some notes below to point out platform-specific information you should be aware of prior to installing Monetra.

2.1.1 Linux

Monetra is a self-contained application developed on the Linux platform and ported to other OS's. Multiple Linux distributions are supported (even hand crafted); its only requirement for Linux systems is that you have one of the following versions of GLIBC on your machine:

GLIBC 2.1
GLIBC 2.2
GLIBC 2.3

<http://www.gnu.org/software/libc/libc.html>

2.1.2 FreeBSD

Monetra has been ported and tested to run optimally on the FreeBSD 4 and FreeBSD 5 series.

2.1.3 Solaris

Monetra has been ported and tested to run optimally on Sun Solaris 8 and Sun Solaris 9 (SPARC), but should also operate just fine on Solaris 7.

Note:

Additional configuration may be required for this OS due to the missing random number generator. Several free utilities are available to provide these services and are annotated in the configuration section.

2.1.4 IBM AIX

Monetra has been ported and tested to run optimally on IBM AIX 4.3.3 and AIX 5.1

Note:

Additional configuration may be required for this OS due to the missing random number generator. Several free utilities are available to provide these services and are annotated in the configuration section.

2.1.5 SCO OpenServer

Monetra has been ported and tested to run optimally on SCO OpenServer release 5

Notes:

- 1) Additional configuration may be required for this OS due to the missing random number generator. Several free utilities are available to provide these services and are annotated in the configuration section.
- 2) If libsocket.so.2 does not exist on your system create a symlink to libsocket.so.1
- 3) For OpenServer 5.0.[4-6] the patches 'oss646b or higher', and 'oss631b or higher' may be required.

2.1.6 Mac OS X

Monetra has been ported and tested to run optimally on Mac OS X 10.2 (Jaguar) and OS X 10.3 (Panther).

Note:

As of Monetra 4.0, Panther will be the default build environment, and although we port and test on Jaguar, you might be required to upgrade to the latest Mac platform to obtain SLA support offerings.

2.1.7 Microsoft Windows®

Monetra has been ported and tested to run optimally on Microsoft Windows, version 95 through XP to include Server 2000 and 2003.

Note:

As of Monetra 4.0, Windows Server 2003 will be the default build environment and although we port and test on alternate and legacy Windows products, you might be required to upgrade to the latest supported platform from Microsoft to obtain SLA support offerings. To remain compliant with PCI/CISP and other security standards you must be able to provide OS level security patches to your systems and thus, you must be running a vendor supported OS.

2.2 Communication Notes

Monetra is classified as a "middleware" software product. With that said, Monetra must be set up to provide both "internal" and "external" connections. It is helpful to keep in mind what communication functionality is required prior to setting up the engine.

2.2.1 Supported Internal Application Connections

Internal: These connections facilitate communication between Monetra and the client application (like POS and WWW). Currently this connectivity is provided via a modular subsystem, and supported modules include Drop File (shared directory), TCP/IP and SSL.

<i>Connection Type</i>	<i>Description</i>
DropFile	Provides a quick and reliable method to communicate with Monetra to process transactions. Although IP or SSL connections are recommended, the DropFile does provide for legacy application connectivity. Please review the Monetra Secure Implementation Guide when implementing drop files.
TCP/IP	Client applications can use standard TCP/IP socket to pass transactions to Monetra. You will need to ensure you have an IP stack installed and functioning on your system prior to installing Monetra.
SSL	Client applications can use Secured Sockets Layer (SSL) to pass transactions to Monetra. For an overview of SSL, please review online F.A.Q's at http://www.monetra.com .
HTTP/HTTPS	Client application can use our XML message format to communicate with the Monetra server. For an overview of XML, please review the Monetra Protocol Guide available at http://www.monetra.com .

2.2.2 Supported External Application Connections

External: These connections facilitate communication between the Monetra Payment engine and the processing institutions. Currently Monetra can utilize modems, HTTPS (Internet) and Frame Relay (IP) connections for outbound processing.

<i>Connection Type</i>	<i>Description</i>
Modems	<p>Even if you plan on connecting via HTTPS or frame-relay, it is highly recommended to configure a modem for fail-over processing. Modems are supported as a communications link across all certified platforms. Multiple modems can be used simultaneously and they do not have to be of the same brand/make/model.</p> <p>Please consider the following:</p> <ul style="list-style-type: none">• most processing is done at 1200 bps or less so that old modems will work great.• Monetra provides for configuring initialization strings on a per modem basis (take note of your modem's init strings)

	<ul style="list-style-type: none"> Main Street has found that USR's brand of modems have been successfully used by clients across all platforms (no, we do not sell USR modems)
HTTPS/SSL via Internet	Certain processors allow direct connectivity via SSL/HTTPS (Internet) for authorization and settlement requests. Main Street can provide the connection parameters for you, but be advised of potential security settings (like firewall etc.) that may need adjustment. Please visit our online F.A.Q's for more information on connecting to the processor via the Internet.
Frame Relay (IP)	Monetra supports direct processing via dedicated circuits to multiple processing institutions. Please be advised that these lines must be provisioned from the chosen processor, and that Monetra may need to be verified (tested) once in place prior to the system going live. Typical turnaround on a dedicated ckt/Monetra setup is 60 days.

2.3 Data Storage Notes

Monetra allows you to choose between the Monetra proprietary database and an SQL database of your choice. Both database layouts are structured the same within Monetra, so neither will give you more functionality in Monetra than the other. Any decision between the two should be based on redundancy/volume.

2.3.1 Monetra Database

The Monetra proprietary database is designed to be used where the use of an SQL database server is not convenient. The internal format of this database is optimized for Monetra, and currently allows for the highest volume per minute while executing transactions. Drawbacks to this database are audit-level query performance and data replication provided by most SQL databases.

2.3.2 SQL Database

SQL database support in Monetra is targeted towards high transaction load servers where hundreds of thousands of transactions will be initiated each year (or even each month!). SQL databases provide the speed and reliability needed to store and recall high-volume transaction data.

Prior to installing Monetra, ensure that you have your database properly installed with the following parameters configured:

- **Database:** Create a database named "Monetra".
- **Security:** Set the permissions on the database and note the username and password for the "Monetra" database (for future configuration entries).
- **Connection:** If the database is a remote machine, note the IP address and port number used to connect (for future configuration entries).

Note:

If you use MYSQL, please read this! SQL databases now REQUIRE Transactional Support. Specifically, this applies to MySQL. If running MySQL v3.23.x, you MUST be using INNODB to enable Transactional support. MySQL v4 should have this enabled by default.

2.4 Security Notes

Monetra provides an advanced solution for the security-conscious company. Whether it's getting the transaction to Monetra securely or how Monetra handles that transaction once it's been received, our primary focus while developing Monetra was the security of our clients' customer data.

Note: Please review the *Monetra Secure Implementation Guide* for further information.

2.4.1 IP/SSL

If you will be running Monetra in IP mode, you may want to consider securing your communications via (SSL) or other similar encryption schema. It is also recommended to deploy Monetra's extended firewall rule set features as outlined in the secure implementation guide.

2.4.2 Data Encryption

Monetra fully supports *strong algorithmic encryption* to provide safe data storage. Multiple algorithms and key-lengths may be used so please review the *Monetra Secure Implementation Guide* prior to setting any values.

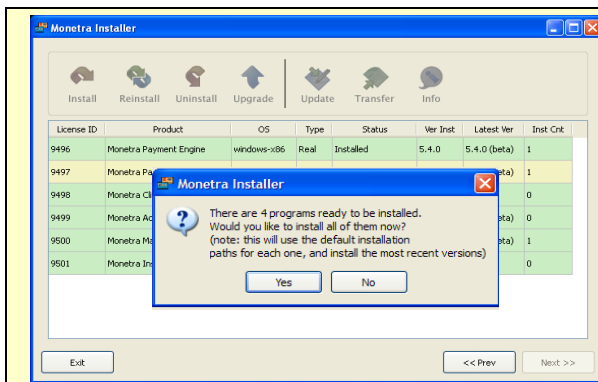
3 Installation

3.1 Monetra Installer Utility

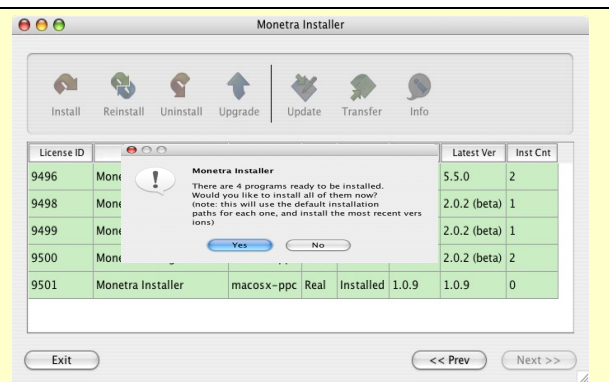
As of version 5.0, Main Street provides an advanced Installation and Update utility for all supported platforms called the *Monetra Installer*. The utility is provided in both Graphical (GUI) and command line (console) binary executable form.

The installation instructions provided in this manual describe the procedures when using the Monetra Installer. If you have a need to install software without using the Installer Utility then please contact support@monetra.com

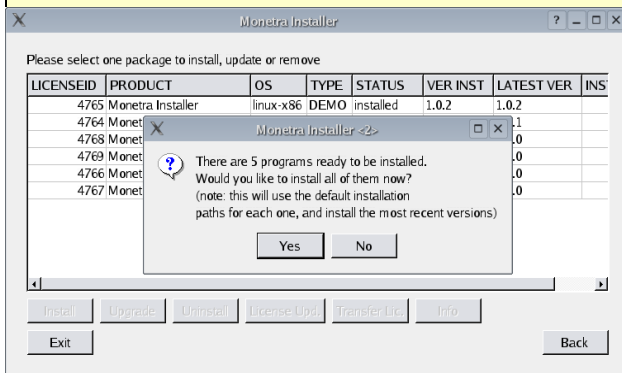
Example: Screen shots of the Installer running on multiple platforms can be viewed below:



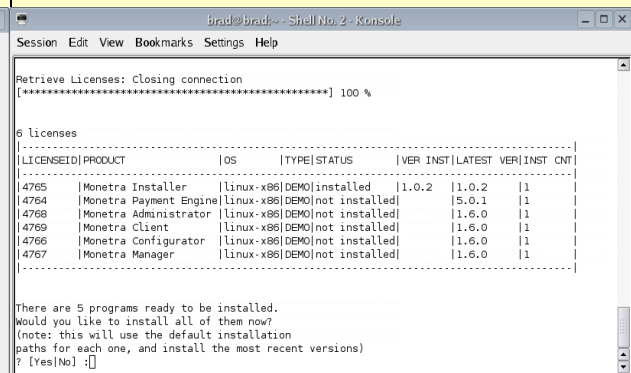
GUI Installer on Microsoft Windows



GUI Installer on Mac OS X



GUI Installer on Linux



Console Installer on Linux

3.1.1 Table Headers

When you are logged into the installer, you should be presented with a table displaying the following header information: Note: Rows in GREEN indicate Installed, rows in YELLOW indicate an upgrade is available, rows in RED indicate an available license that is not installed and rows in GREY indicate a license that is unavailable.

License ID	Product	OS	Type	Status	Ver Inst	Latest Ver	Inst Cnt
9496	Monetra Payment Engine	windows-x86	Real	Installed	5.4.0	5.4.0 (beta)	1
9497	Monetra Payment Connector	windows-x86	Real	Upgrade Available	1.0.5	1.0.6 (beta)	1
9498	Monetra Client	windows-x86	Real	Installed	2.0.1	2.0.1	0

LICENSEID: This is the license number on file for any particular software product.

PRODUCT: This is the friendly name of the software product as licensed.

OS: This represents the operating system and architecture of the software product licensed.

TYPE: This defines whether or not the license is REAL or a DEMO.

STATUS: This notifies user if the software is installed or not.

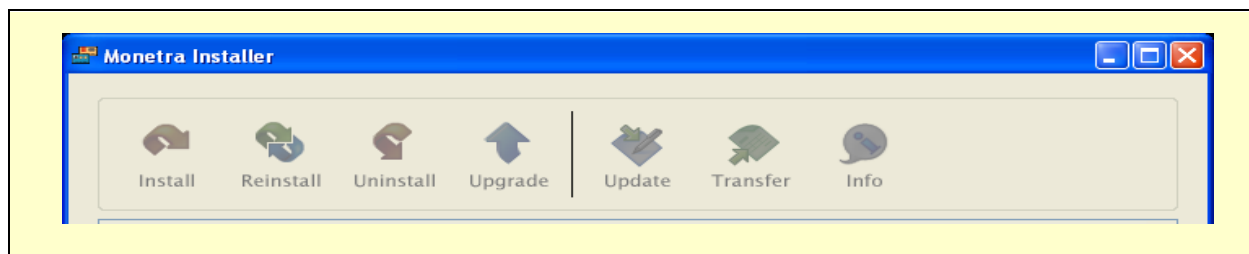
VER INST: This represents the software version installed on the system.

Latest Ver: This represents newest version available.

INST CNT: This represents the number of times the software has been installed/reinstalled.

3.1.2 Available Functions

The Monetra Installer utility provides for the following Functions...



INSTALL/REINSTALL: The install -reinstall button provides a means to install new products.

UNINSTALL: **The Uninstall button will remove the selected software product from the system.**

UPGRADE: The upgrade button will download and upgrade the software to the most current release based on license eligibility.

UPDATE: The license update button will download the most current license file and install it to the system.

TRANSFER: The transfer license button will transfer one eligible license for another (For example, this would be used to transfer a DEMO license to a REAL license).

INFO: The info button will list out all the details for a particular product/license.

3.2 Installation on Unix/Linux

While the instructions provided in this section are targeted towards Linux users, the information applies to all Unix/Unix_like Operating environments.

NOTE: These instructions assume the target server has a functioning Internet connection. If you need to download the software onto a CDROM then please contact support@monetra.com

3.2.1 Download the Monetra Installer Utility

- Visit our website at <http://www.monetra.com> and log into the client section with your email address and passcode. Choose the 'Licenses' link at the top of the page.
- Download the Monetra Installer for your version of GLIBC (download section at top)
- Once downloaded, extract the tarball

```
gunzip < monetrainstaller-linux-x86-glibc23-1.0.9.tar.gz | tar xvpf -
```

- Enter directory created

```
cd monetrainstaller-linux-x86-glibc23-1.0.9
```

- Run the monetra installer utility. Note, if you do not have a windowing environment set up (i.e. X-Windows), then use the console application.

```
./monetrainstaller_console
```

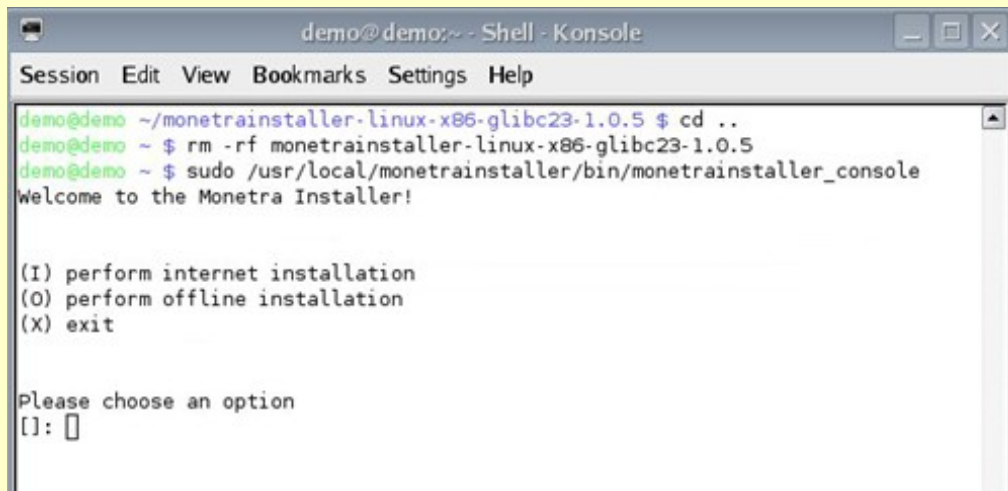
If you do have X-Windows running you may run the graphical installer

```
./monetrainstaller
```

3.2.2 Installing Software via the Console

The following section outlines the installation of software using the console front end to the installer application.

STEP 1. Run the Installer Utility

A screenshot of a terminal window titled "demo@demo:~ - Shell - Konsole". The terminal shows the following commands and output:

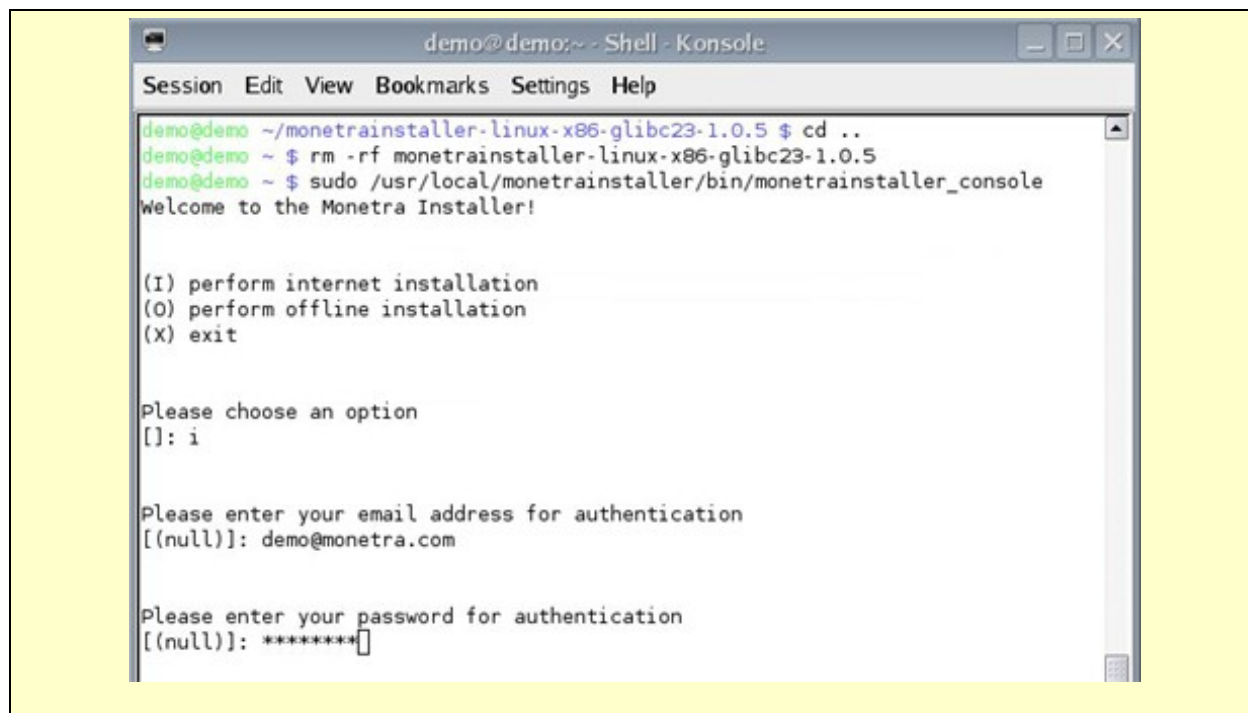
```
demo@demo ~/monetrainstaller-linux-x86-glibc23-1.0.5 $ cd ..
demo@demo ~ $ rm -rf monetrainstaller-linux-x86-glibc23-1.0.5
demo@demo ~ $ sudo /usr/local/monetrainstaller/bin/monetrainstaller_console
Welcome to the Monetra Installer!

(I) perform internet installation
(O) perform offline installation
(X) exit

Please choose an option
[]: 
```

Upon running the utility, the first option is to determine if you want to perform a 'Live' install via the Internet (requires Internet connection on target server, broadband recommended) or if you have a package already on the target server. (note: You may download packages from the client section of our website).

STEP 2. Enter your Main Street Client Credentials.



```
demo@demo ~/monetrainstaller-linux-x86-glibc23-1.0.5 $ cd ..
demo@demo ~ $ rm -rf monetrainstaller-linux-x86-glibc23-1.0.5
demo@demo ~ $ sudo /usr/local/monetrainstaller/bin/monetrainstaller_console
Welcome to the Monetra Installer!

(I) perform internet installation
(O) perform offline installation
(X) exit

Please choose an option
[]: i

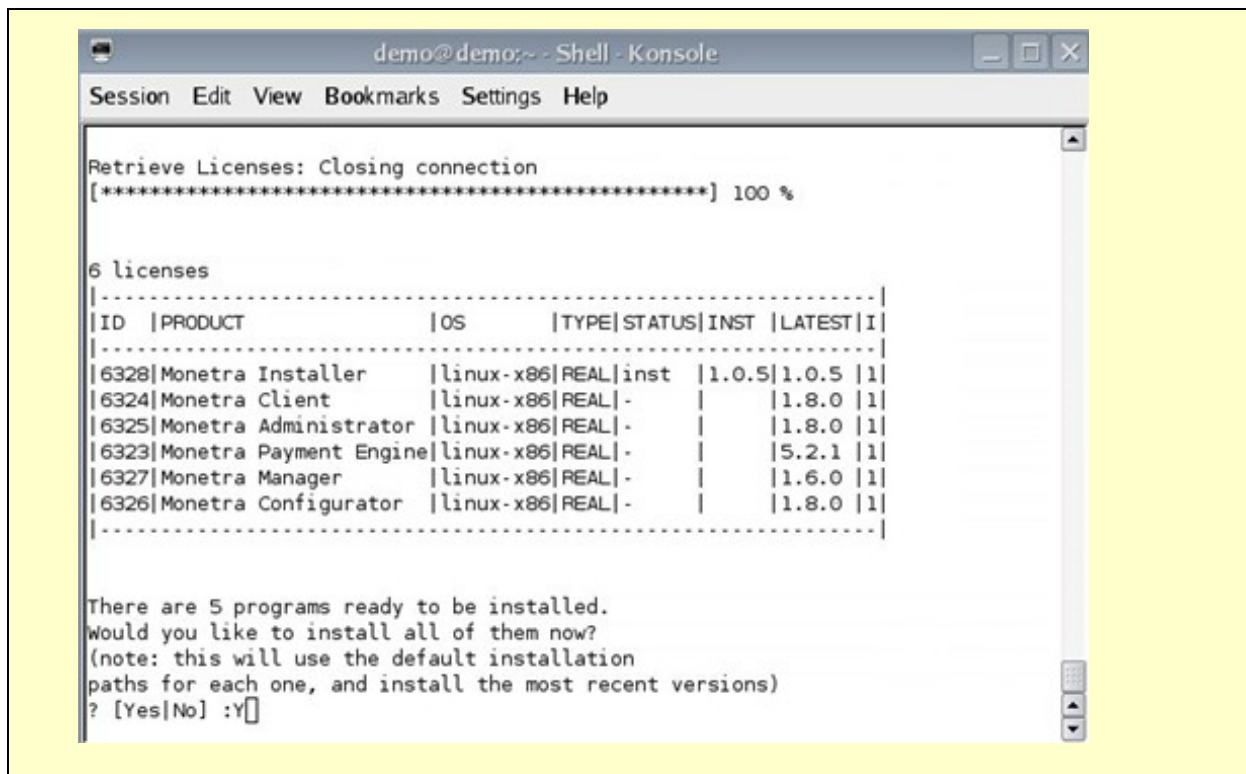
Please enter your email address for authentication
[(null)]: demo@monetra.com

Please enter your password for authentication
[(null)]: *****
```

When registering for any software product from Main Street (or one of our Partners) you should have been provided with an email and pass code to access the client area of our website. The same credentials used to access the website should be entered here.

Note: At any time you may access the client section of our website and update your company profile.

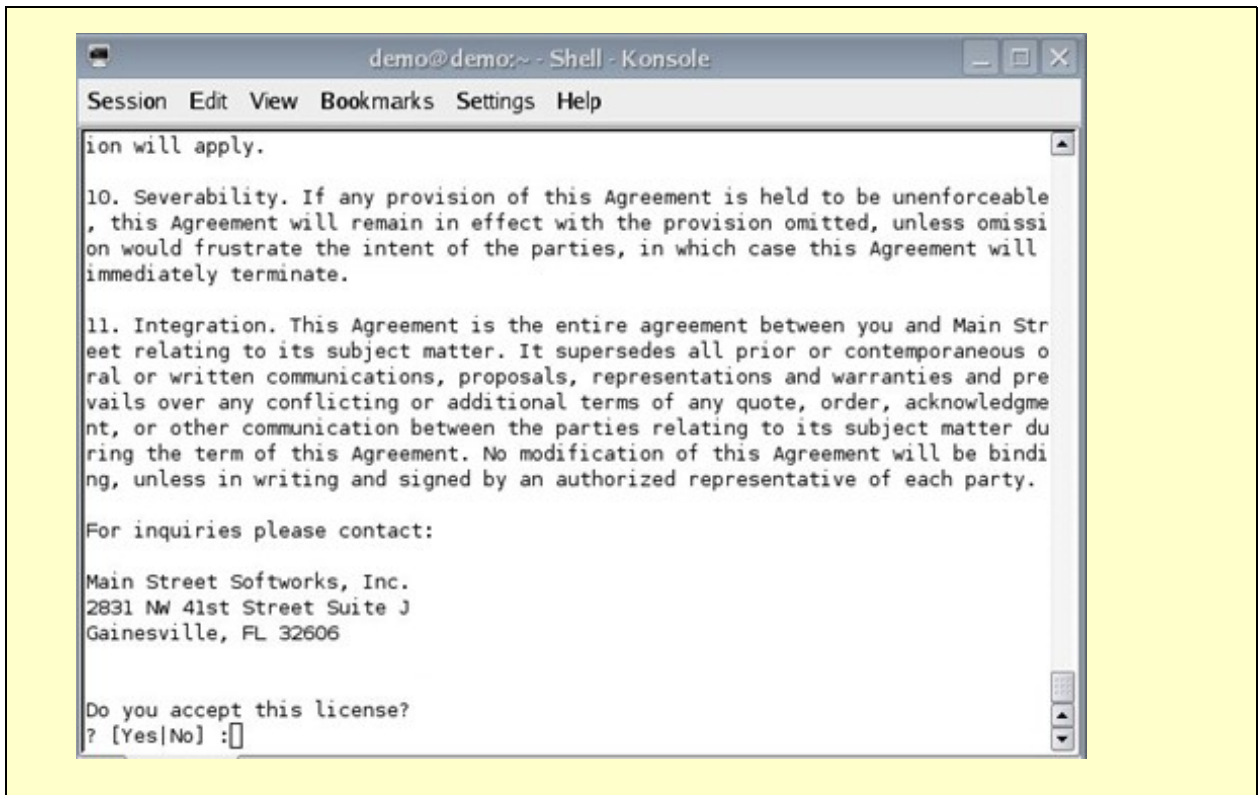
STEP 3. Choose Software to Install.



If this is a new install, you will be prompted to install multiple applications. Choose YES.

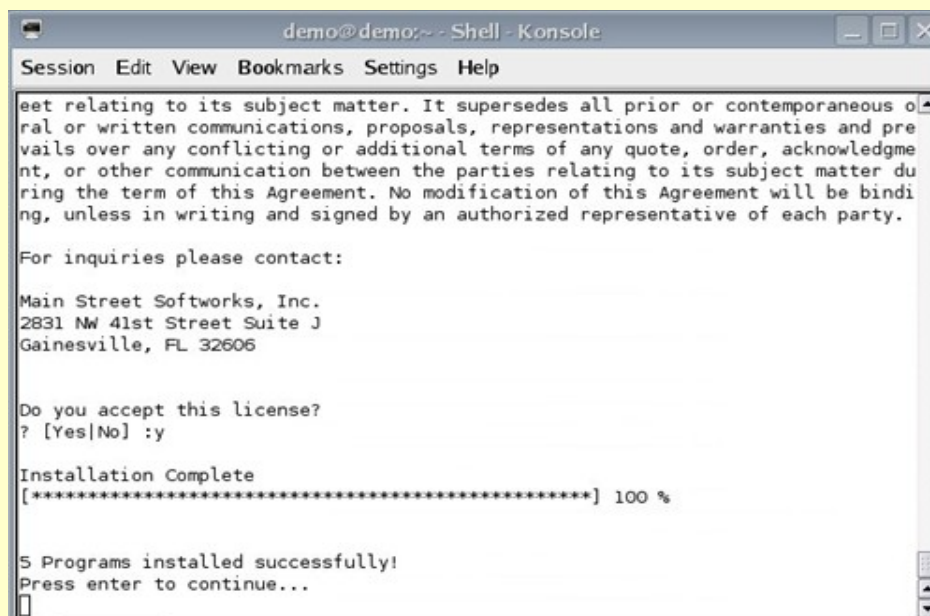
Note: While applications can be installed/uninstalled and upgraded one at a time, it is easier (on initial install) to install all of them at once.

STEP 4. End User License Agreement.



For each software product installed, you will be presented with an End User License Agreement. You must accept the agreement to continue.

STEP 5. Finish Up.

A screenshot of a terminal window titled "demo@demo:~ - Shell - Konsole". The window shows the end of a software installation. The text in the terminal includes: "eet relating to its subject matter. It supersedes all prior or contemporaneous oral or written communications, proposals, representations and warranties and prevails over any conflicting or additional terms of any quote, order, acknowledgment, or other communication between the parties relating to its subject matter during the term of this Agreement. No modification of this Agreement will be binding, unless in writing and signed by an authorized representative of each party." followed by "For inquiries please contact:", "Main Street Softworks, Inc.", "2831 NW 41st Street Suite J", "Gainesville, FL 32606", "Do you accept this license?", "? [Yes|No] :y", "Installation Complete", "[*****] 100 %", and "5 Programs installed successfully! Press enter to continue...".

```
demo@demo:~ - Shell - Konsole
Session Edit View Bookmarks Settings Help
eet relating to its subject matter. It supersedes all prior or contemporaneous oral or written communications, proposals, representations and warranties and prevails over any conflicting or additional terms of any quote, order, acknowledgment, or other communication between the parties relating to its subject matter during the term of this Agreement. No modification of this Agreement will be binding, unless in writing and signed by an authorized representative of each party.

For inquiries please contact:

Main Street Softworks, Inc.
2831 NW 41st Street Suite J
Gainesville, FL 32606

Do you accept this license?
? [Yes|No] :y

Installation Complete
[*****] 100 %

5 Programs installed successfully!
Press enter to continue...

```

Upon successful completion, you should get a screen similar to the following.

That's it, you can now continue with configuring the Payment Engine, as described in the Monetra Configuration Guide.

3.2.3 Installing Software via the GUI interface

If you choose to use the GUI application, then you may follow any of the examples provided for Windows or Mac, outlined below.

Note: This assumes that the machine installing the Monetra Installer has the X-libraries available.

- If X-Windows is running on the local machine and you wish to use the GUI installer, you must make sure that users other than yourself (i.e. root) on the same machine have access to the display: `* xhost +localhost`
- If X-Windows is running on a separate machine and you have logged in via SSH with X11-forwarding enabled, you should not have to configure anything more to utilize the GUI installer.
- If X-Windows is running on a separate machine and you wish to use the GUI installer by exporting the DISPLAY over your network, you need to make sure the remote machine has permissions to send X-messages to the machine running X-Windows; and you also need to point the DISPLAY environment variable to the proper locations. (Examples use 192.168.1.10 as remote IP running X-Windows; replace this with appropriate IP address).
 - * `xhost +192.168.1.10` (On machine running X-Windows)
 - * `export DISPLAY=192.168.1.10:0.0` (On machine you wish to install the Monetra installer)

3.3 Installation on Mac OS X

3.3.1 Download and Install the Monetra Installer Utility

Note:

This overview describes installation on the Apple Macintosh, OS X platform. Note: If you run Microsoft Windows or Mac OS X as an operating system, you may find the most current versions of the Monetra Installer in the General Support section of our website, under the downloads link. Or you may find them at this URL:

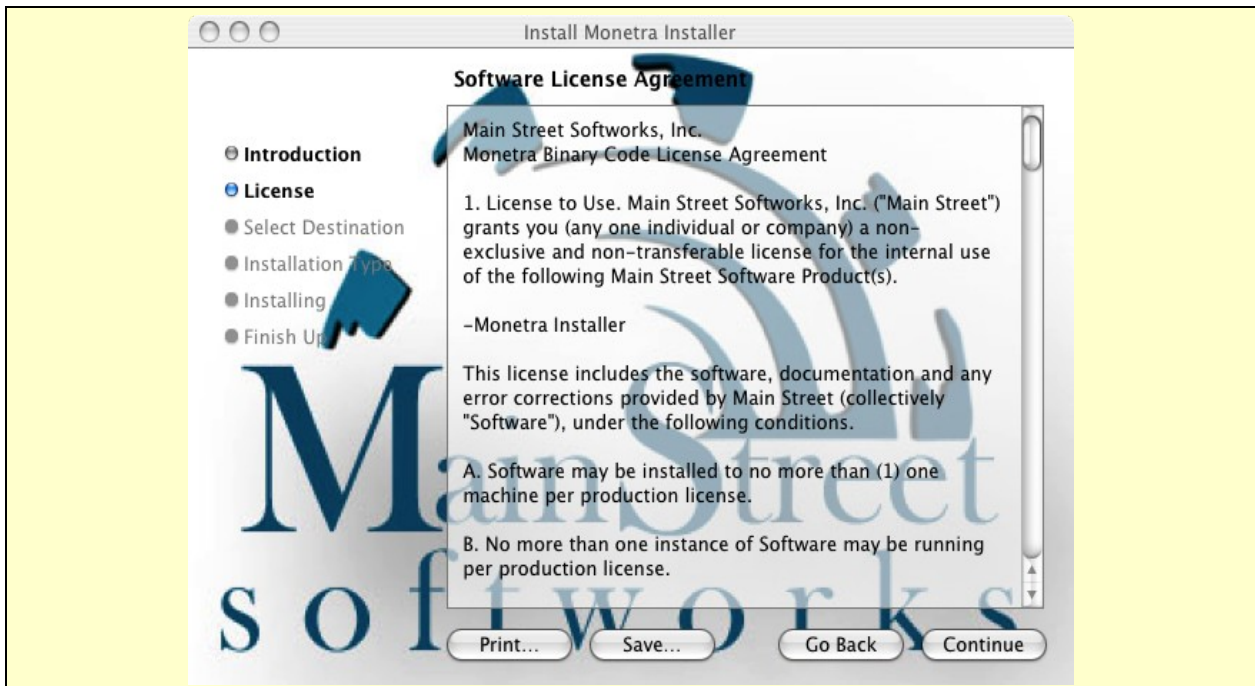
[Http://www.monetra.com/downloads.html](http://www.monetra.com/downloads.html)



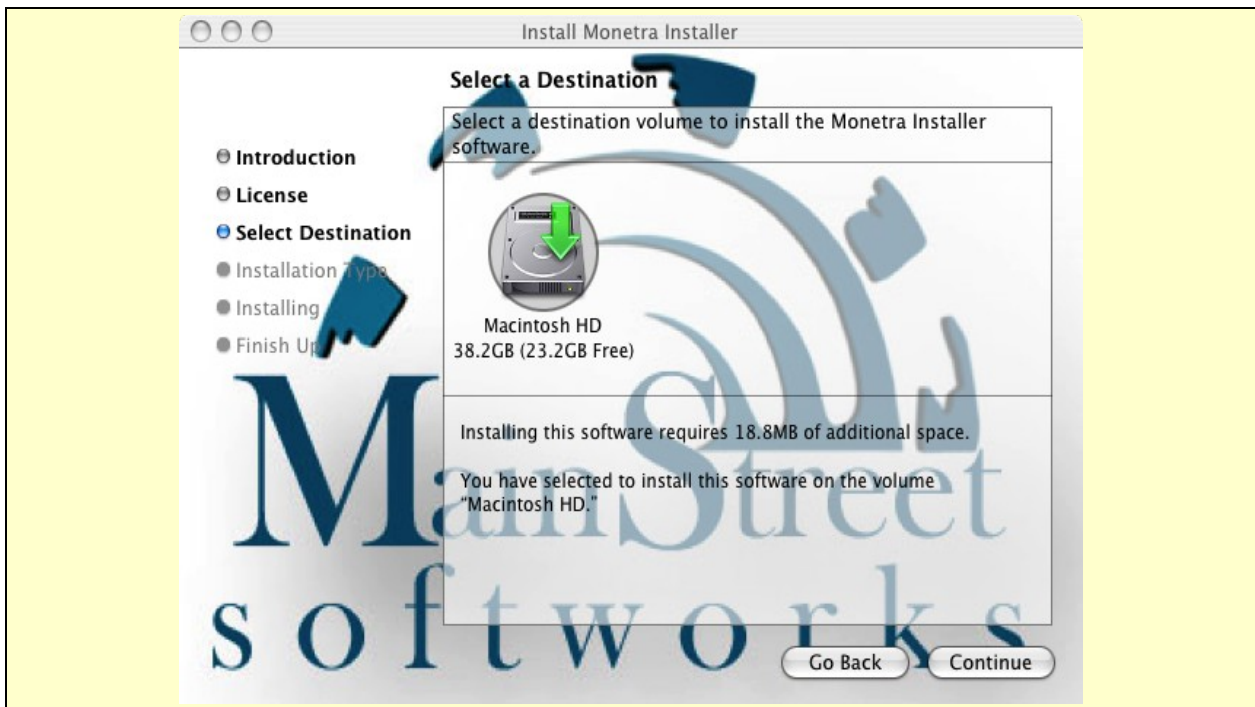
Step 1: Once the Installer has downloaded and been extracted, you should see a package file (.pkg) name MonetraInstaller. Double click this package to install the MonetraInstaller.



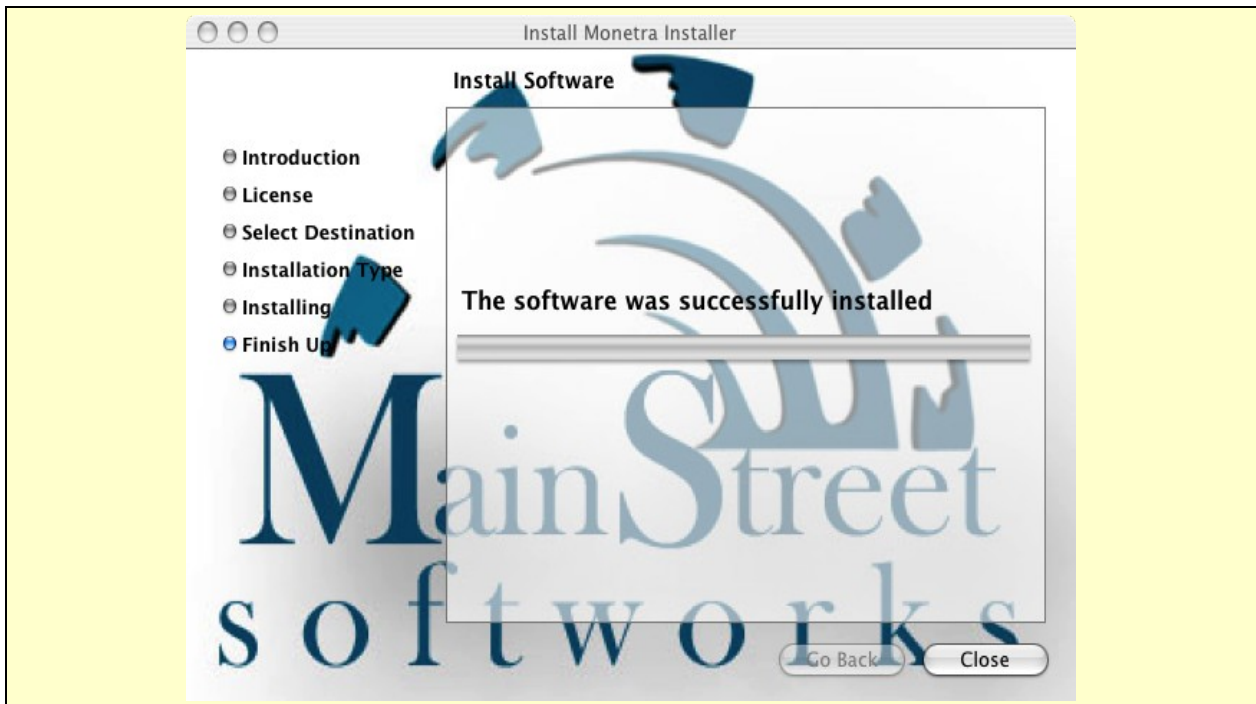
Step 2: You should see a dialog box similar to the one above. Choose the Continue button. Note: Along the way you might be prompted for your Administrative Password (while installing software, or running tools with elevated privileges).



Step 3: To continue, you must Accept the License Agreement.



Step 4: You will now be asked to select a drive destination. Select a drive and click Continue.



Step 5: After a short installation routine is run, you should see the following message.

3.3.2 Install Remaining Software

Once the Monetra Installer has been setup on your system, you may now run it to install all other Main Street software.

Note: You will need one of the following to proceed:

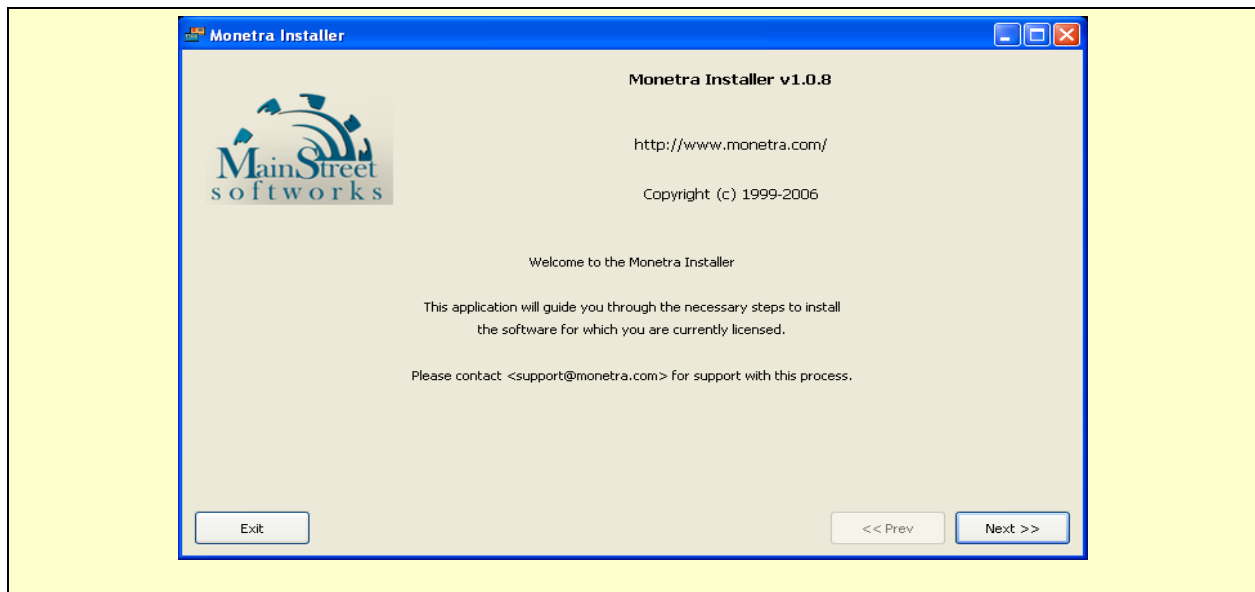
a) For a live install, you will need the credentials (email and passcode) that were assigned to you by a Main Street partner or associate.

b) For an offline install, you will need the appropriate package file which can be downloaded from the client section of our website.

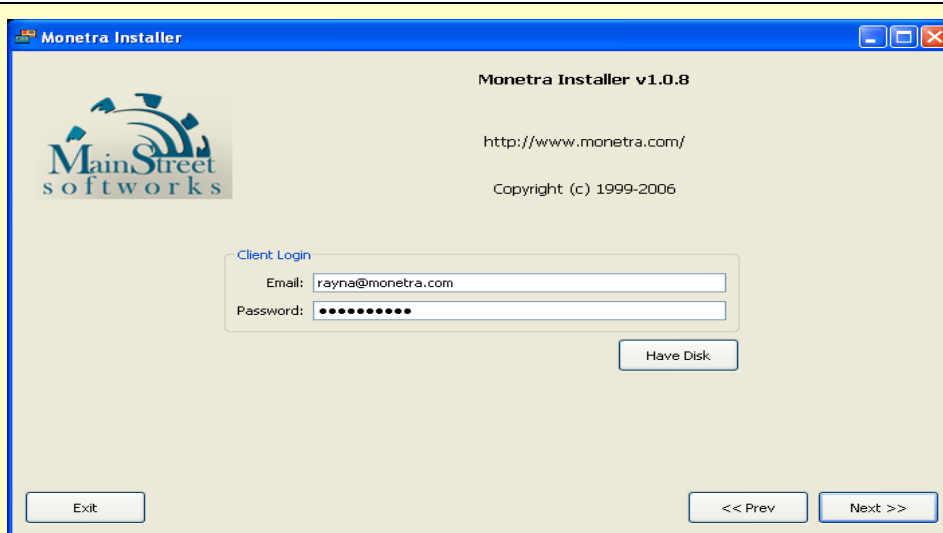
Note: If this is your first time installing, and you have a package of software products, the installer might prompt you to install all XX number of products.

Step 1: Run the Monetra Installer by navigating to the Applications directory, then inside the Monetra folder:

Applications-->Monetra-->Monetra Installer



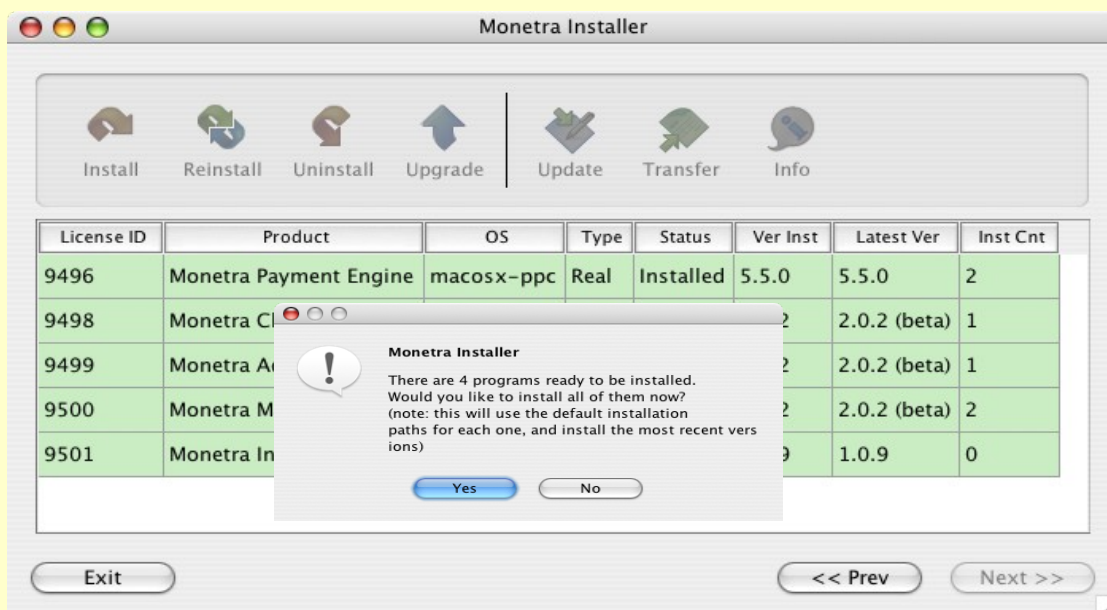
Step 1: When presented with the 'Welcome' screen, choose 'Next'.



Step 2a: If you are performing a 'Live' install, enter your email address and pass code, then choose the 'Next' button.

Step 2b: If you are installing 'offline', choose the 'Have Disk' button.

Note: You must have already downloaded the appropriate package/files to proceed.



Step 3: If this is an initial/fresh install, you can choose to install all programs or simply highlight the appropriate software product and choose the 'Install' button.



Step 4: Upon successful installation you should see the following dialog. Choose OK to exit.

At this point the Monetra Payment Engine (and associated utilities) should be installed and ready for initial configuration.

Please reference the Monetra Configuration Guide for more details.

3.4 Installation on Microsoft® Windows

3.4.1 Download and Install the Monetra Installer Utility

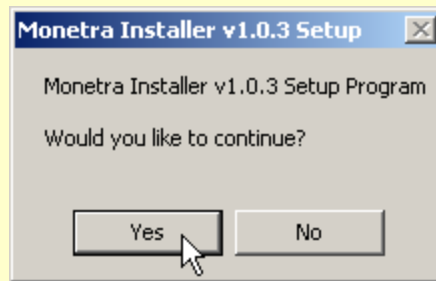
Note:

This overview describes installation on the Microsoft Windows platform, but should be similar across all other supported platforms. If you run Microsoft Windows or Mac OS X as an operating system, you may find the most current versions of the Monetra Installer in the General Support section of our website, under the downloads link. Or you may find them at this URL:

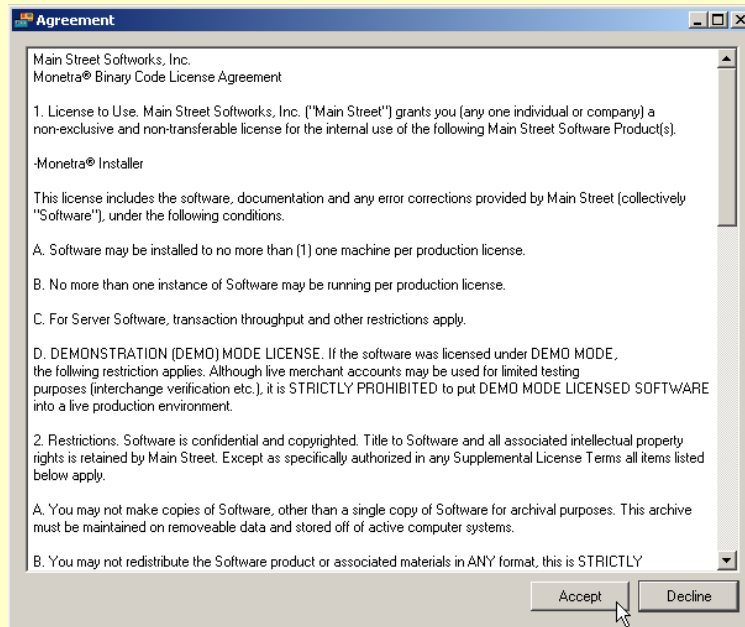
[Http://www.monetra.com/downloads.html](http://www.monetra.com/downloads.html)



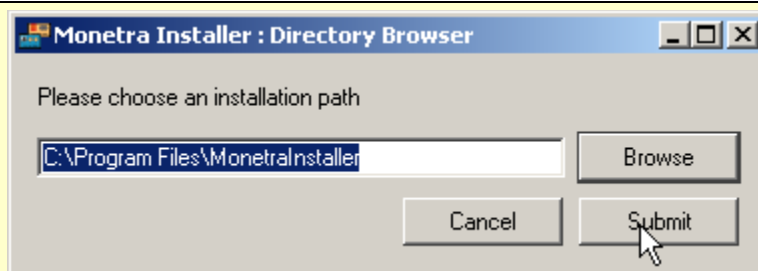
Step 1: Double click the installer .exe file to run the installation.



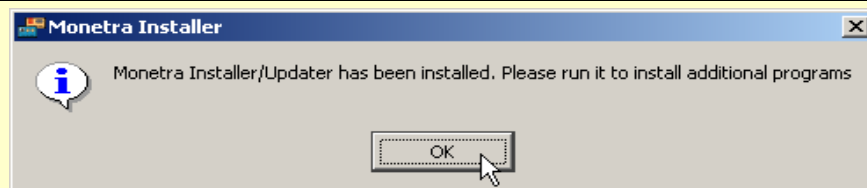
Step 2: When asked to continue installation, choose Yes.



Step 3: To continue, you must Accept the License Agreement.



Step 4: Use the default Install path or choose an alternate and click Submit.



Step 5: After a short installation routine is run, you should see the following message.

3.4.2 Install Remaining Software

Once the Monetra Installer has been setup on your system, you may now run it to install all other Main Street software.

Note: You will need one of the following to proceed:

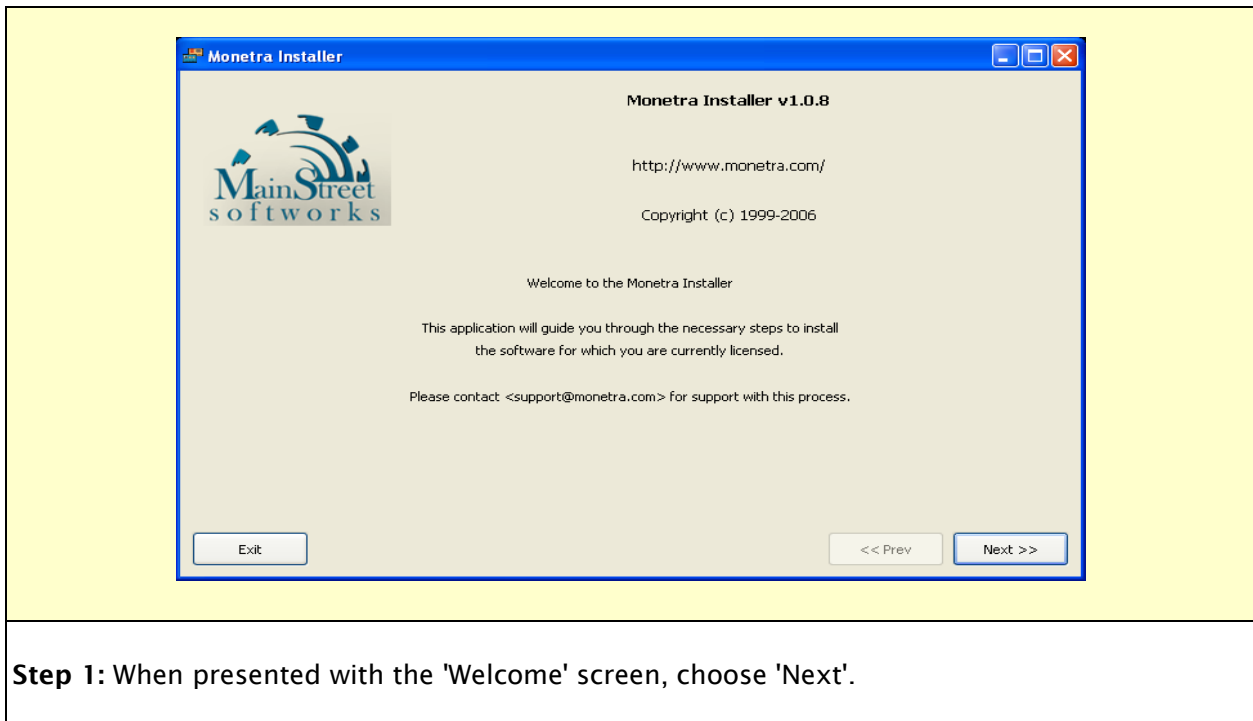
a) For a live install, you will need the credentials (email and passcode) that were assigned to you by a Main Street partner or associate.

b) For an offline install, you will need the appropriate package file which can be downloaded from the client section of our website.

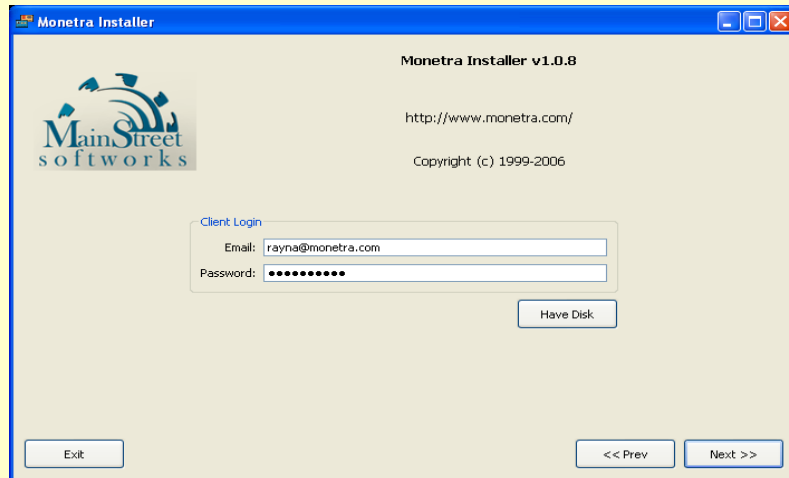
Note: If this is your first time installing, and you have a package of software products, the installer might prompt you to install all XX number of products.

Step 1: Run the Monetra Installer by navigating to the programs folder:

START-->Programs-->Monetra-->Monetra Installer



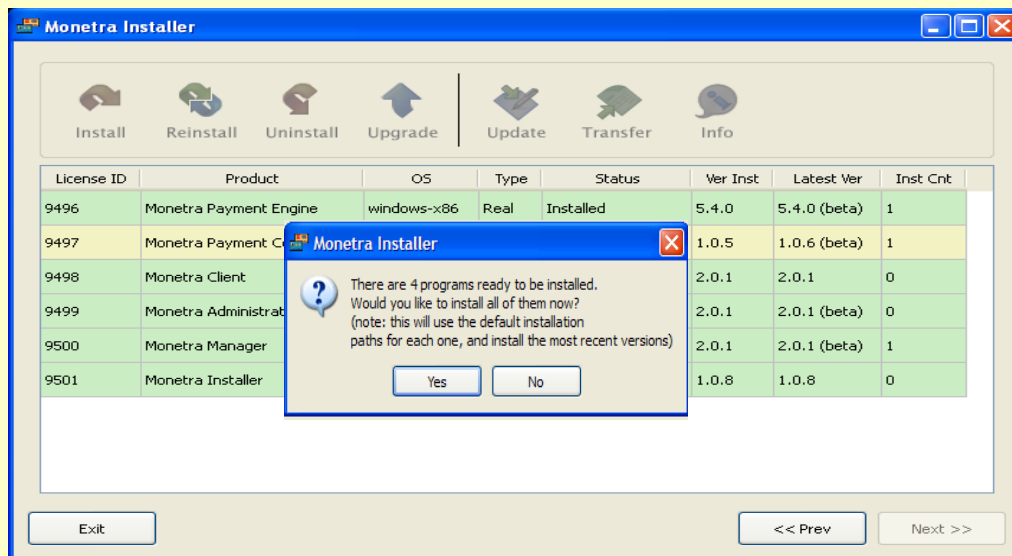
Step 1: When presented with the 'Welcome' screen, choose 'Next'.



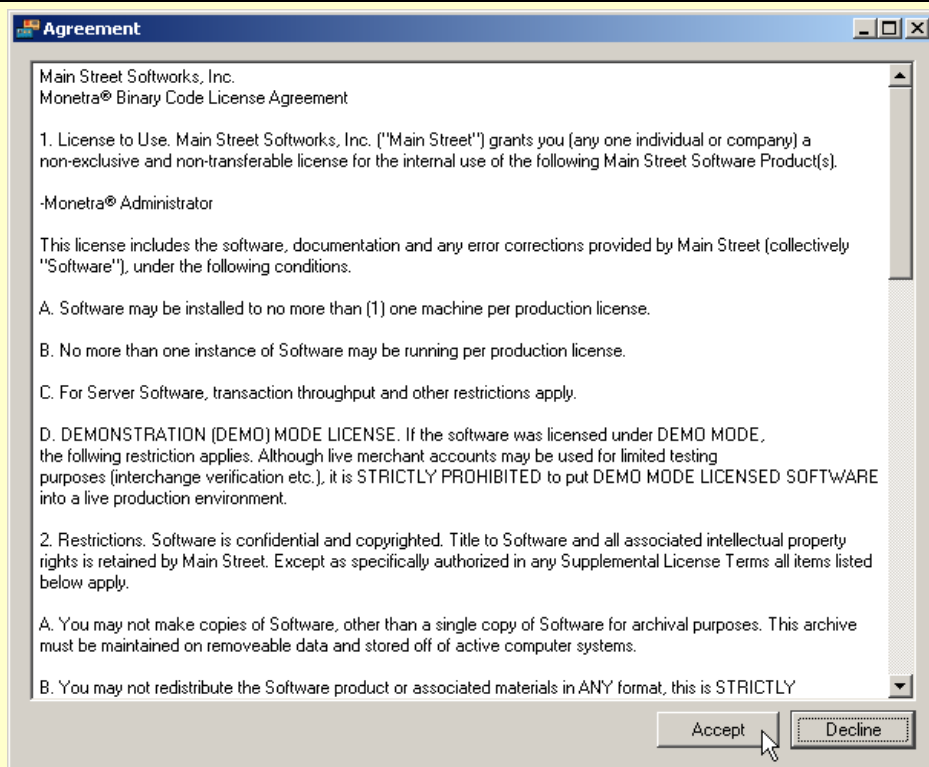
Step 2a: If you are performing a 'Live' install, enter your email address and pass code, then choose the 'Next' button.

Step 2b: If you are installing 'offline', choose the 'Have Disk' button.

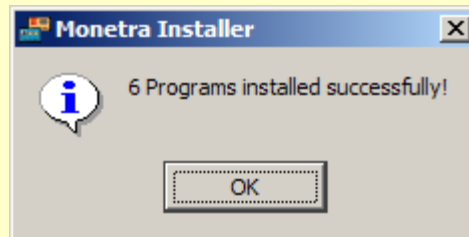
Note: You must have already downloaded the appropriate package/files to proceed.



Step 3: If this is an initial/fresh install, you can choose to install all programs or simply highlight the appropriate software product and choose the 'Install' button.



Step 4: Accept the License Agreement to continue.



Step 5: Upon successful installation you should see the following dialog. Choose OK to exit.

At this point the Monetra Payment Engine (and associated utilities) should be installed and ready for initial configuration.

Please reference the Monetra Configuration Guide for more details.

4 Upgrading

4.1 Upgrading Monetra from a Pre 5.x series

If you are running a 2.0 or 2.1 series you must first upgrade to 2.1.3 for proper export.

If you are running a 2.5 series you must first upgrade to 2.5.6 for proper export.

If you are running a 3.0 series you must first upgrade to 3.0.1 for proper export.

All versions released after 3.0.1 can properly export application data.

Step 1. Settle all transactions.

Step 2. Export data

Step 3. Stop Monetra

Step 4. (optional) Back Up Monetra directories.

Step 5. Move previous Monetra/MCVE

```
mv /usr/local/{monetra|mcve} /usr/local/{monetra|mcve}-old  
mv /etc/{monetra|mcve} /etc/{monetra|mcve}-old
```

Step 6. Install Monetra 5.x via the Monetra Installer utility.

Step 7. Verify configuration settings (/etc/*.conf)

Step 8. Import Data

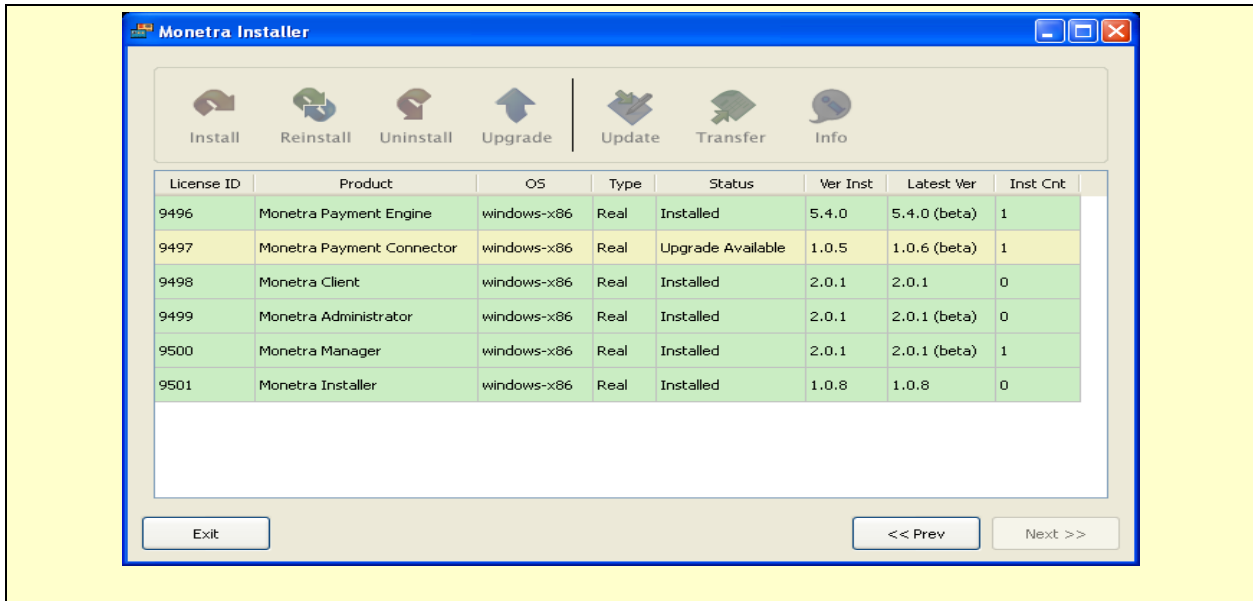
If you have questions regarding upgrading your current software then please contact us via support@mainstreetsoftworks.com.

4.2 Upgrading Monetra 5.x series

This procedure describes upgrading software via the Monetra Installer Utility using an internet connection. If you need to upgrade outside of the installer utility, or download a package file then please contact support@monetra.com

4.2.1 Run the Monetra Installer

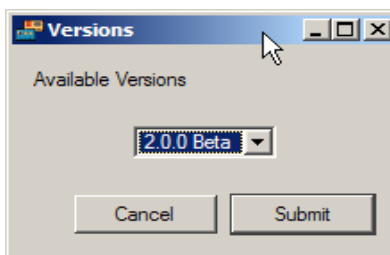
The first step is to run the Monetra Installer, and log in via the supplied credentials (email, pwd)



Step 1: When inside the Installer Main View, Select the software product you would like to upgrade by Highlighting the row. Note: If there is new software available, it will be noted in the STATUS column.

Step 2: Click on the Upgrade button.

Step 3: A dialog box will prompt, asking for the version you would like to upgrade to (note: in most situations, you should leave this as defaulted).



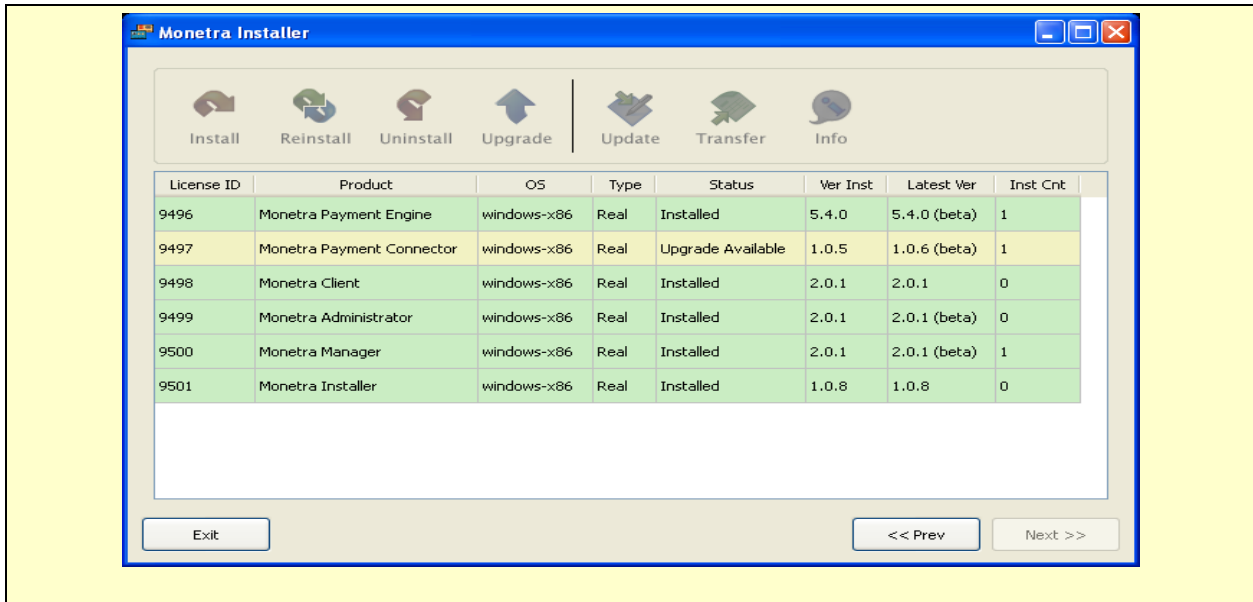
Choose your version, and hit Submit.

5 Uninstallation

This procedure assumes you used the Monetra Installer utility to install all software packages. If at any time you have questions regarding un-installation of our software products, then please contact support@monetra.com

5.1.1 Run the Monetra Installer

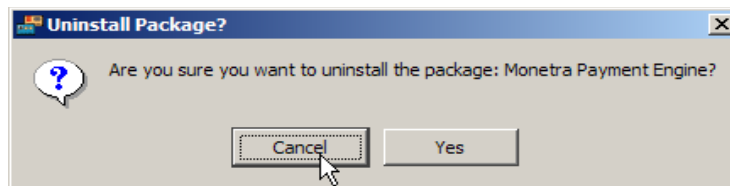
The first step is to run the Monetra Installer, and log in via the supplied credentials (email, pwd)



Step 1: When inside the Installer Main View, select the software product you would like to Un-Install by Highlighting the row. Note: You can verify it is installed by reviewing the STATUS column.

Step 2: Click on the Un-install button.

Step 3: A dialog box will prompt, asking if you are sure you want to un-istall the software product.



To completely un-install click on the Yes button.